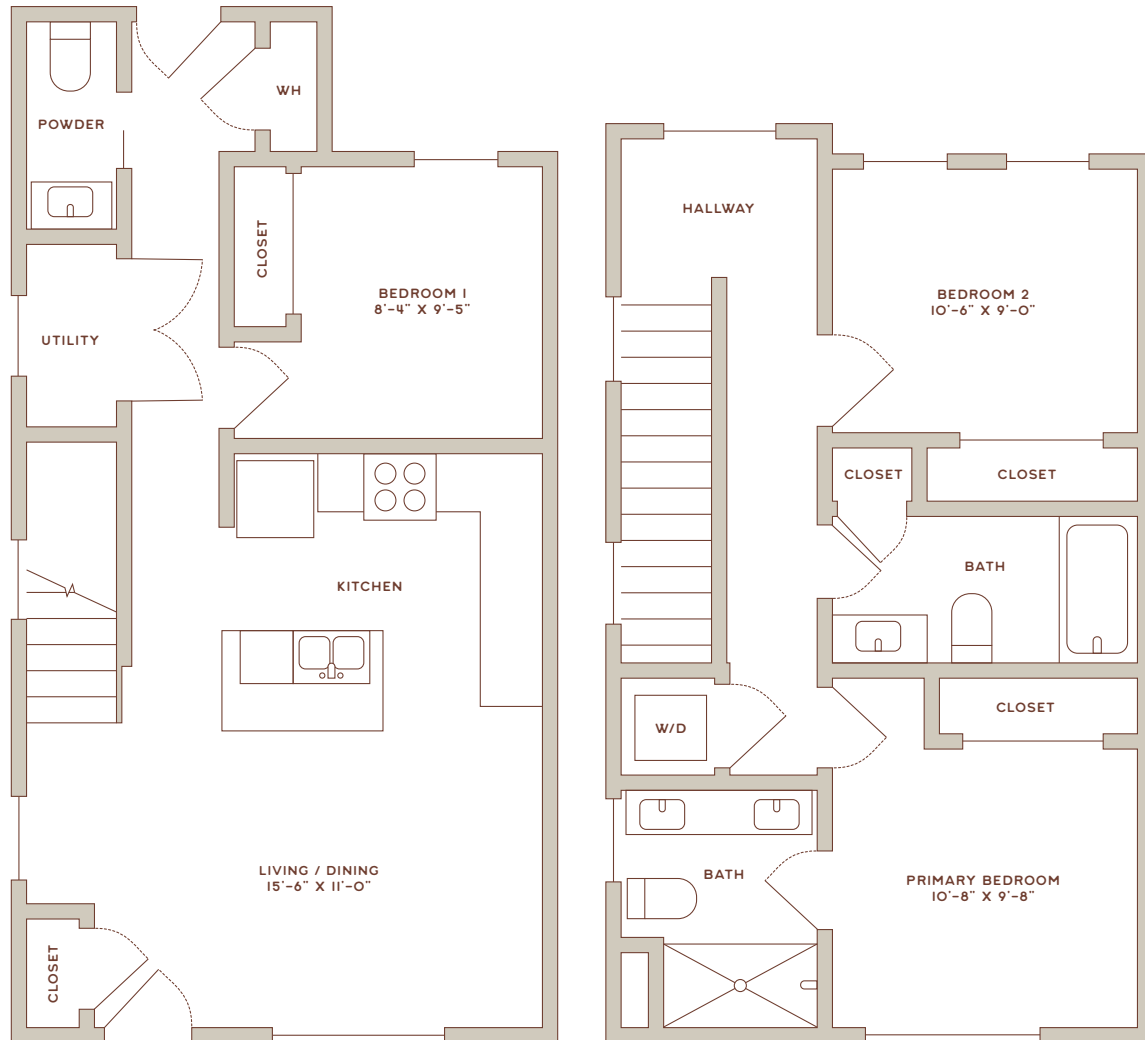


Big Sky

3 BEDS / 2.5 BATHS / DUPLEX — 1,241 SQ FT



AMENITIES

- Four seasons spa
- Luxury spas and sauna
- Clubroom with fireplace and billiards Outdoor firepits and kitchen patio
- State-of-the-art fitness center
- Ski and Bike Tune Up Shop
- Outdoor basketball courts
- Dog Park & Pet Wash
- Landscaped Gardens
- Resident conference room

UNIT FEATURES

- Open and spacious floorplans
- Keyless residence entry
- Sweeping mountain views*
- Private patios and balconies*
- Stainless steel appliances
- In-unit washer & dryer
- Quartz countertops and designer tile backsplash in kitchen
- Frameless glass shower*
- Built-in desk and workspace*

*Select units only

BUFFALO RUN

3290 KURK DRIVE, BOZEMAN, MT 59718 — BUFFALORUNBOZEMAN.COM — 406-631-3868



All residence details are approximate and subject to construction changes and omissions. Plans may contain minor variations from floor to floor. Prices and Availability are subject to change without notice or obligation.